

# Mount Olive Tract



## Overview

The 445-acre Mount Olive Tract, located in Holmes County in the heart of Florida's panhandle, provides an excellent value-investment opportunity for an astute land buyer who recognizes the changing dynamics of this region. There are many other intrinsic benefits as well - a high percentage of planted pines, beautiful Gum Branch Creek crossing the property, a good road network, and functional shape. Neighboring properties are largely either agriculture lands or timberlands - both which contribute to the Mount Olive Tract pulling double duty as a fine recreational property.

Access is very convenient – the property is reached just seven miles north of Bonifay's Interstate 10 interchange via Highway 79. Dothan, Alabama is located 45 minutes away and the world class beaches of Panama City are just a short one-hour drive to the south.

## At a Glance:

### *Acreage:*

445± acres

### *Asking Price:*

\$2,750 per acre

### *Location:*

Holmes County, Florida

### *Special Attributes:*

- Value Investment
- High Plantable Percentage
- Recreational Opportunities
- Beautiful Creek
- Good Road Network

**Arnie Rogers, Licensed Real Estate Broker**

Verdura Realty, LLC • 316 Williams Street • Tallahassee, FL 32303

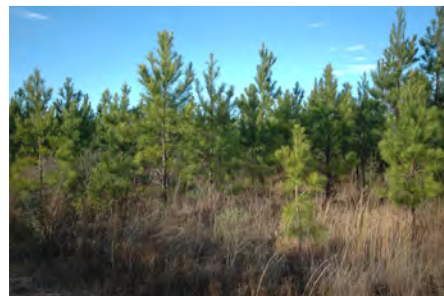
Cell: 850.491.3288 • Email: [arogers@verduraproperties.com](mailto:arogers@verduraproperties.com)

[www.VerduraProperties.com](http://www.VerduraProperties.com)



# Mount Olive Tract

## Photos



**Arnie Rogers, Licensed Real Estate Broker**  
Verdura Realty, LLC • 316 Williams Street • Tallahassee, FL 32303  
Cell: 850.491.3288 • Email: [arogers@verduraproperties.com](mailto:arogers@verduraproperties.com)  
[www.VerduraProperties.com](http://www.VerduraProperties.com)

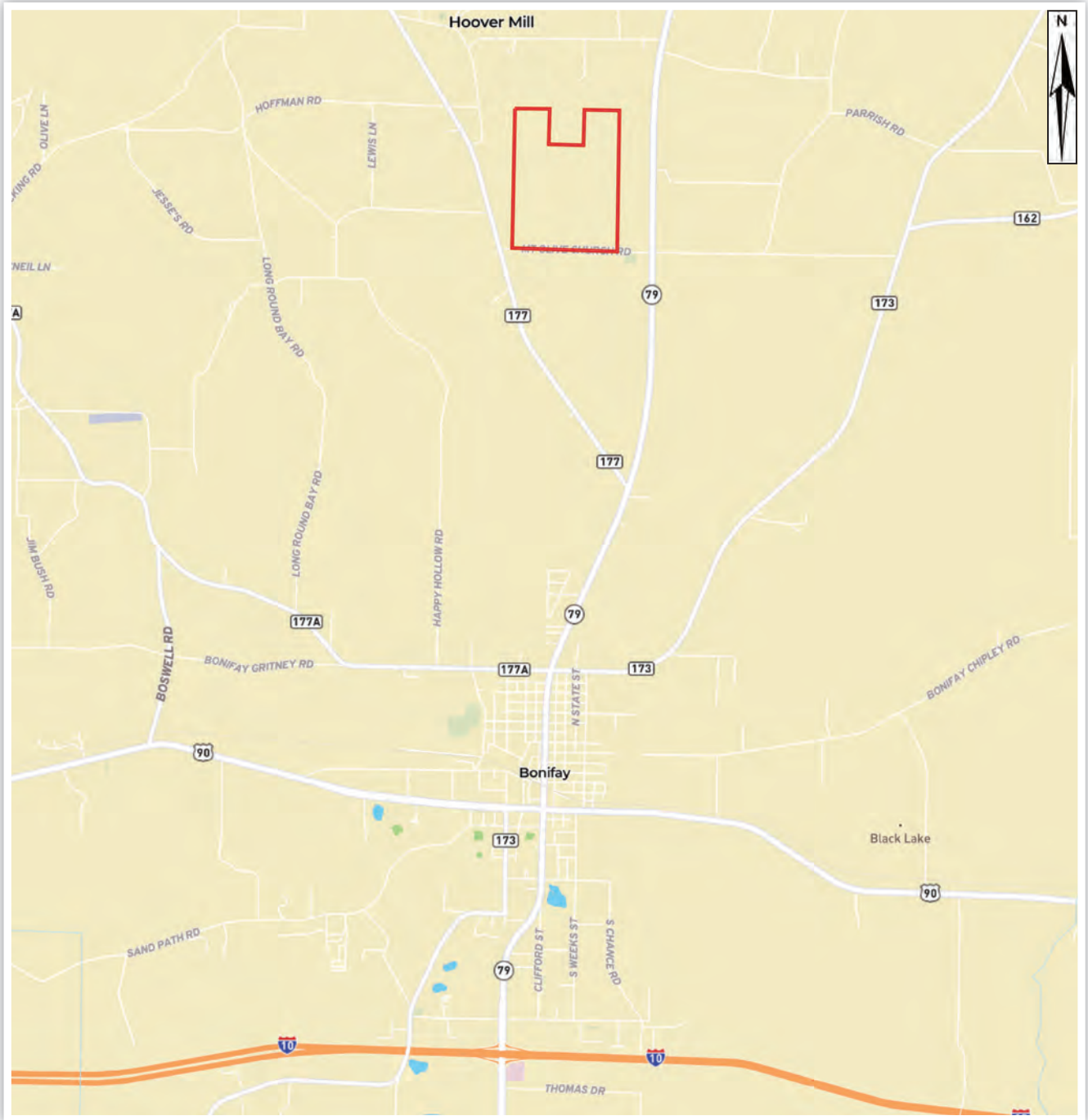


Please note that while all information is believed to be reliable, none is guaranteed.



# Mount Olive Tract

## Location



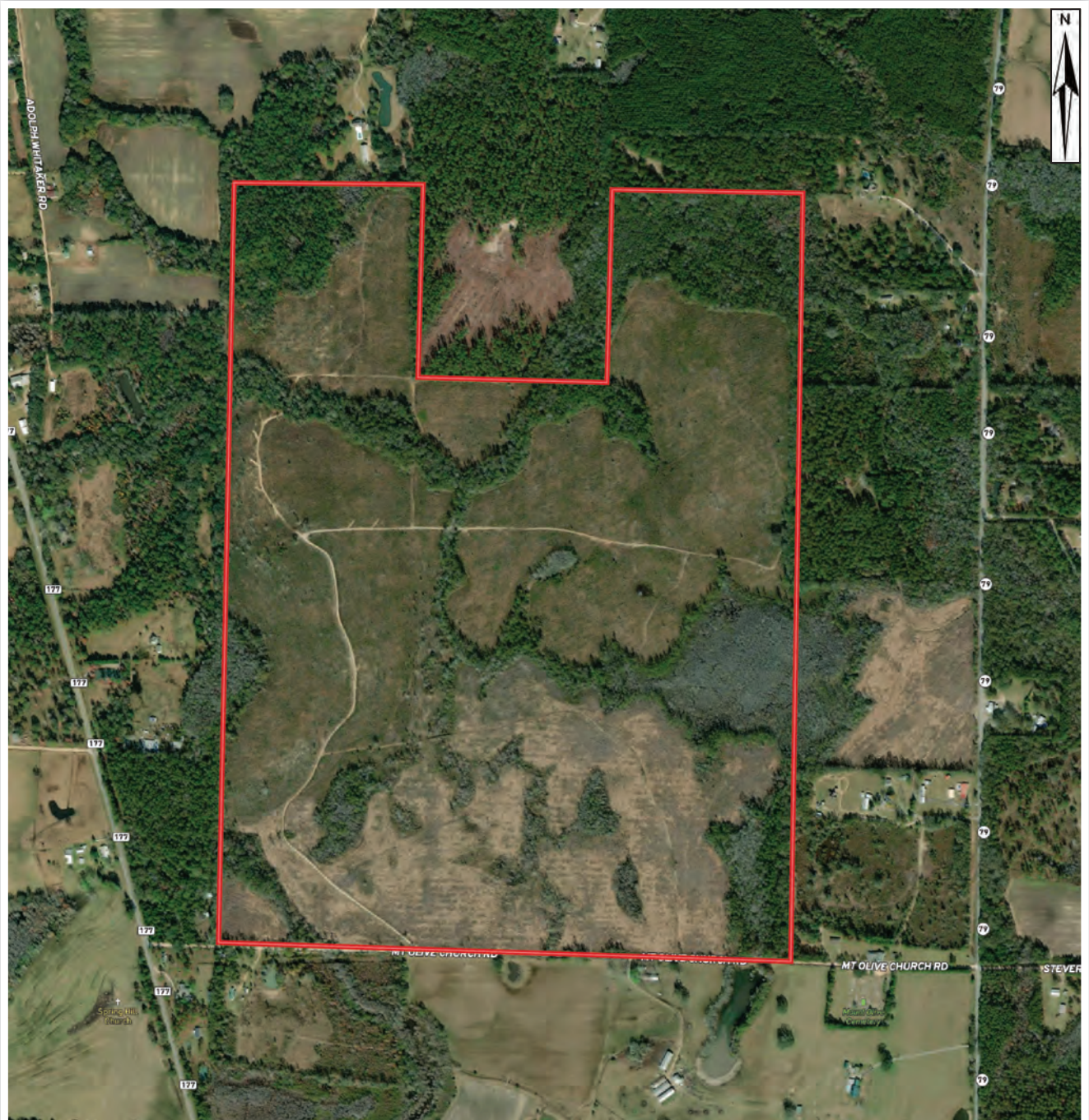
**Arnie Rogers, Licensed Real Estate Broker**  
Verdura Realty, LLC • 316 Williams Street • Tallahassee, FL 32303  
Cell: 850.491.3288 • Email: [arogers@verduraproperties.com](mailto:arogers@verduraproperties.com)  
[www.VerduraProperties.com](http://www.VerduraProperties.com)



Please note that while all information is believed to be reliable, none is guaranteed.

# Mount Olive Tract

## Aerial



**Arnie Rogers, Licensed Real Estate Broker**  
Verdura Realty, LLC • 316 Williams Street • Tallahassee, FL 32303  
Cell: 850.491.3288 • Email: [arogers@verduraproperties.com](mailto:arogers@verduraproperties.com)  
[www.VerduraProperties.com](http://www.VerduraProperties.com)

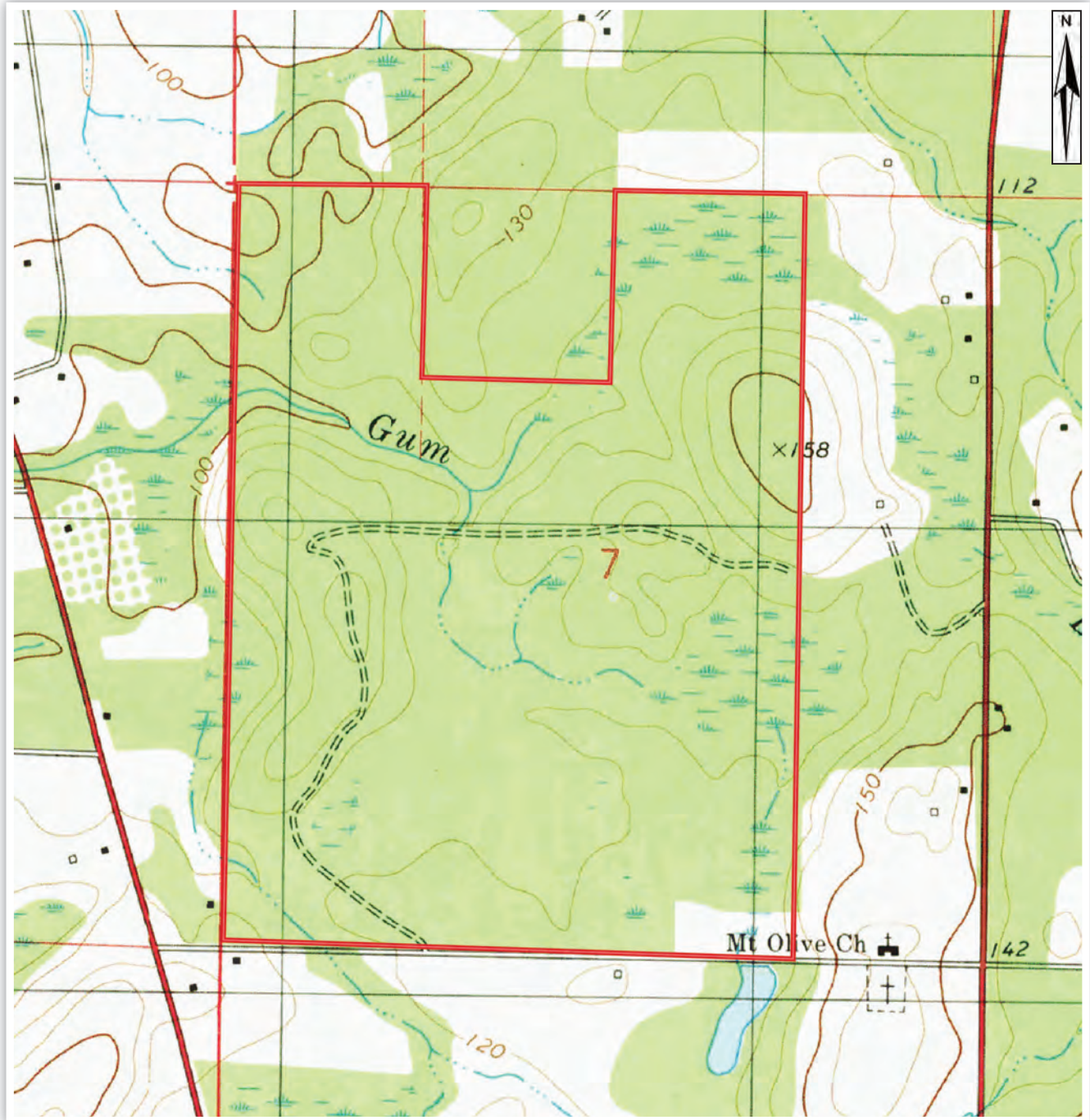


Please note that while all information is believed to be reliable, none is guaranteed.



# Mount Olive Tract

Topo



**Arnie Rogers, Licensed Real Estate Broker**  
Verdura Realty, LLC • 316 Williams Street • Tallahassee, FL 32303  
Cell: 850.491.3288 • Email: [arogers@verduraproperties.com](mailto:arogers@verduraproperties.com)  
[www.VerduraProperties.com](http://www.VerduraProperties.com)



Please note that while all information is believed to be reliable, none is guaranteed.